

RENO, NEVADA

AL-524 (FAA)

RNAV (GPS) RWY 32

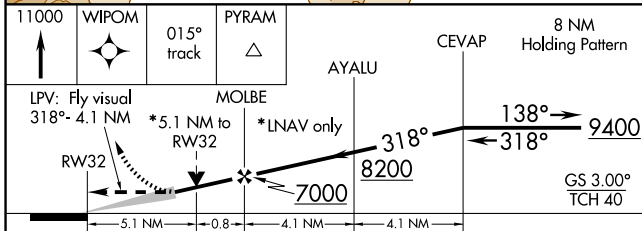
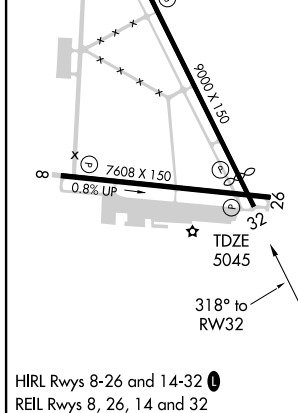
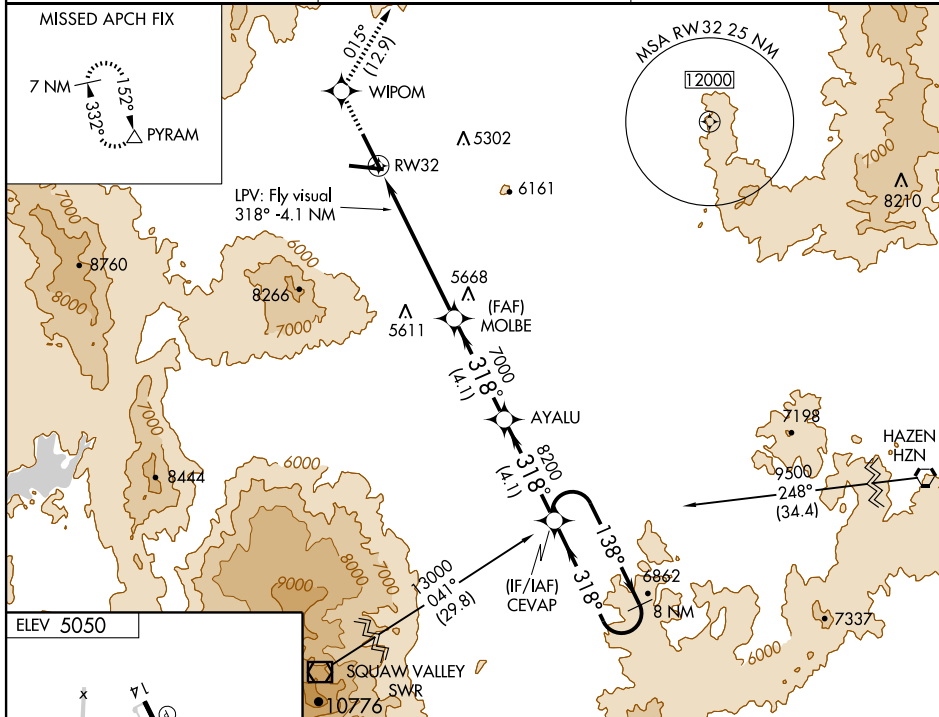
RENO/STEAD (4SD)

WAAS CH 60920 W32A	APP CRS 318°	Rwy Idg TDZE Apt Elev	7800 5045 5050
--	------------------------	-----------------------------	---

▼ DME/DME RNP-0.3 NA.
▲NA If local altimeter setting not received, use Reno/Tahoe Intl altimeter setting and increase all DAs/MDAs 120 feet. VDP NA when using Reno/Tahoe Intl altimeter setting. When VGSI inoperative, circling Rwy 8 NA at night.

MISSED APPROACH: Climb to 11000 direct WIPOM and via 015° track to PYRAM and hold, continue climb-in-hold to 11000.

AWOS-3 135.175	RENO APP CON 126.3 353.9	UNICOM 122.7 (CTAF) 0
--------------------------	------------------------------------	---------------------------------



CATEGORY	A	B	C	D
LPV DA	6390-2	1345 (1400-2)	6390-3	1345 (1400-3)
LNNAV/VNAV DA	NA			
LNNAV MDA	6700-1¼ 1655 (1700-1¼)	6700-1½ 1655 (1700-1½)	6700-3	1655 (1700-3)
CIRCLING	6700-5 1650 (1700-5)			

RENO, NEVADA
 Orig 09071

39°40'N- 119°53'W

RNAV (GPS) RWY 32

SW-4, 07 MAY 2009 to 04 JUN 2009

SW-4, 07 MAY 2009 to 04 JUN 2009