

APP CRS  
**071°**

Rwy Idg **4350**  
TDZE **3128**  
Apt Elev **3152**

# GPS RWY 7

GRASS VALLEY/ NEVADA COUNTY AIR PARK (GOO)

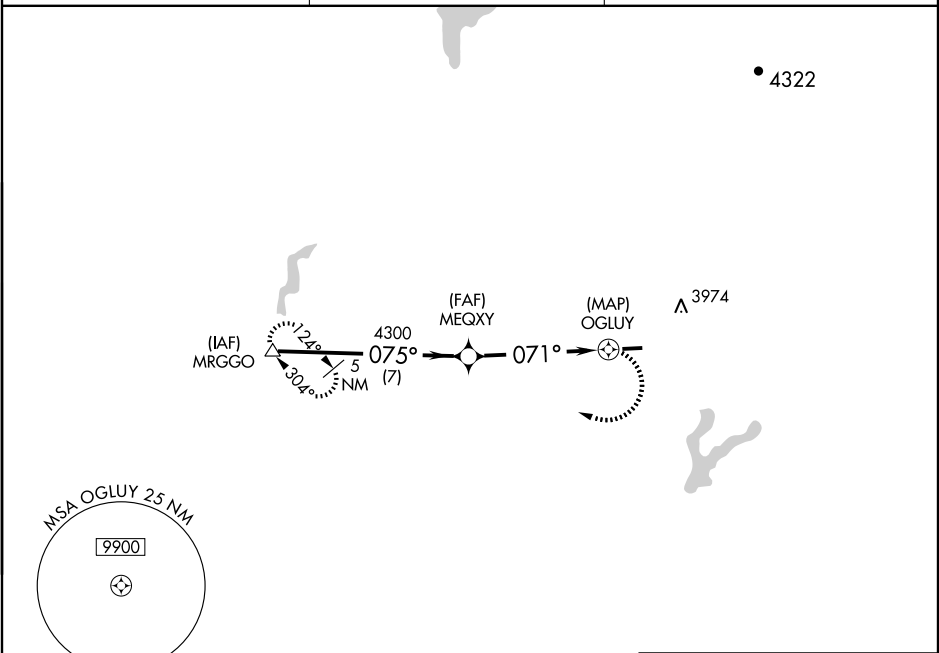
**▽** When local altimeter setting not received, use Emigrant Gap altimeter setting.  
**△ NA** Circling not authorized north of Rwy 7-25.

MISSED APPROACH: Climbing right turn to 6000 direct MRGGO WP and hold.

AWOS-3  
**121.325**

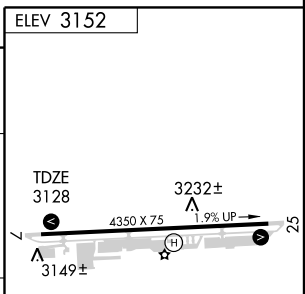
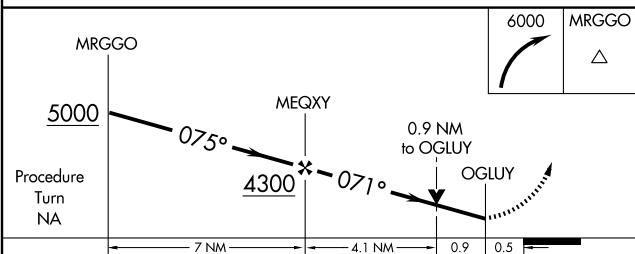
NORCAL APP CON  
**125.4 259.1**

UNICOM  
**122.725 (CTAF) 0**



SW-2, 03 JUN 2010 to 01 JUL 2010

SW-2, 03 JUN 2010 to 01 JUL 2010



CATEGORY	A	B	C	D
S-7	3540-1	412 (400-1)	3540-1¼ 412 (400-1¼)	NA
CIRCLING	3680-1	528 (600-1)	3680-1½ 528 (600-1½)	NA
EMIGRANT GAP ALTIMETER SETTING MINIMUMS				
S-7	3880-1 752 (800-1)	3880-1¼ 752 (800-1¼)	3880-2¼ 752 (800-2¼)	NA
CIRCLING	4020-1 868 (900-1)	4020-1¼ 868 (900-1¼)	4020-2½ 868 (900-2½)	NA

# GPS RWY 7

VOR/DME MYV <b>110.8</b> Chan <b>45</b>	APP CRS <b>058°</b>	Rwy Idg TDZE Apt Elev <b>3152</b>	<b>N/A</b> <b>N/A</b>
-----------------------------------------------	------------------------	-----------------------------------------	--------------------------

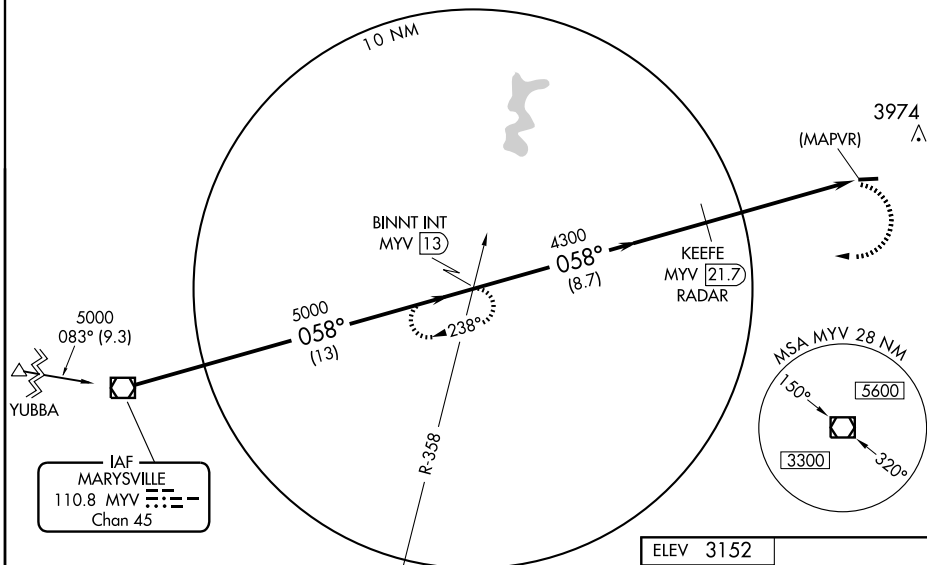
# VOR or GPS-A

GRASS VALLEY/ NEVADA COUNTY AIR PARK (GOO)

<p><b>NA</b></p> <p>When local altimeter setting not received, use Emigrant Gap altimeter setting. Circling not authorized north of Rwy 7-25.</p>	<p>MISSED APPROACH: Climbing right turn to 5000 via MYV R-058 to BINNT Int/MYV 13 DME and hold.</p>
---------------------------------------------------------------------------------------------------------------------------------------------------	-----------------------------------------------------------------------------------------------------

<p>AWOS-3 <b>121.325</b></p>	<p>NORCAL APP CON <b>125.4 259.1</b></p>	<p>UNICOM <b>122.725 (CTAF)</b></p>
----------------------------------	----------------------------------------------	-----------------------------------------

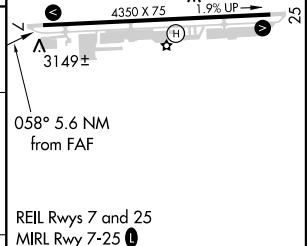
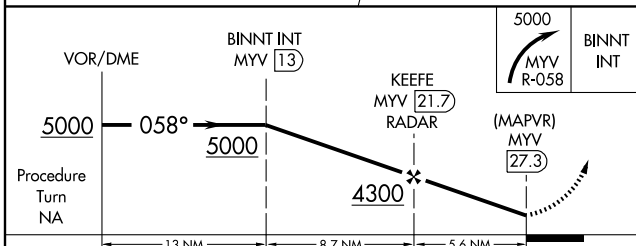
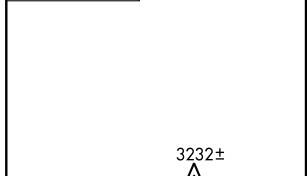
## DME or RADAR REQUIRED



SW-2, 03 JUN 2010 to 01 JUL 2010

SW-2, 03 JUN 2010 to 01 JUL 2010

ELEV 3152



CATEGORY	A	B	C	D	FAF to MAP 5.6 NM					
CIRCLING	4280-1¼ 1128 (1200-1¼)	4280-1½ 1128 (1200-1½)	4280-3 1128 (1200-3)	NA	Knots	60	90	120	150	180
					Min:Sec	5:36	3:44	2:48	2:14	1:52