

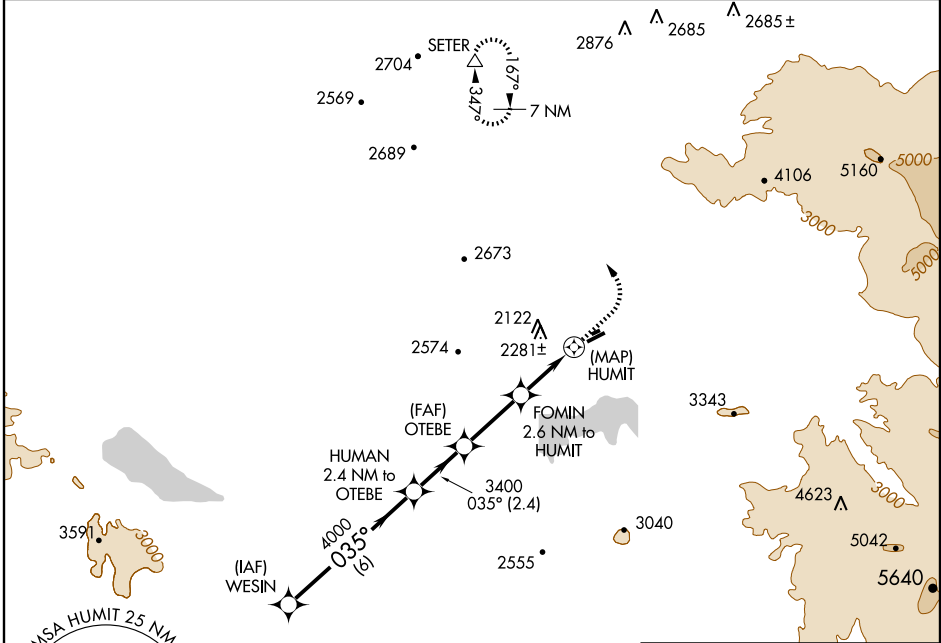
# RNAV (GPS) RWY 5

HEMET-RYAN (HMT)

APP CRS <b>035°</b>	Rwy Idg <b>4314</b>
	TDZE <b>1505</b>
	Apt Elev <b>1512</b>

<p><b>NA</b></p> <p>DME/DME RNP-0.3 NA. Circling NA at night.</p>	<p>MISSED APPROACH: Climb to 2500, then climbing left turn to 7900 direct SETER and hold, continue climb-in-hold to 7900.</p>
---	---

AWOS-3 <b>118.375</b>	MARCH APP CON * <b>133.5 324.1</b>	UNICOM <b>123.0 (CTAF)</b>
--------------------------	---------------------------------------	-------------------------------



SW-3, 07 MAY 2009 to 04 JUN 2009

SW-3, 07 MAY 2009 to 04 JUN 2009



ELEV 1512

TDZE 1505

Rwy 4-22 restricted for glider operations.

MIRL Rwy 5-23

	WESIN	HUMAN 2.4 NM to OTEBE	OTEBE	FOMIN 2.6 NM to HUMIT	HUMIT	SETER
Procedure Turn	5500	4000	3400	2520	2500	7900
	6 NM	2.4 NM	2.7 NM	0.5 NM	2.1 NM	0.5 NM

CATEGORY	A	B	C	D
RNAV MDA	2360-1 855 (900-1)	2360-1½ 855 (900-1½)	2360-2½ 855 (900-2½)	NA
CIRCLING	2360-1 848 (900-1)	2400-1½ 888 (900-1½)	2600-3 1088 (1100-3)	NA