

LOC/DME I-SMX 108.9 Chan 26	APP CRS 120°	Rwy Idg 6304 TDZE 240 Apt Elev 261
--	------------------------	---

ILS or LOC RWY 12

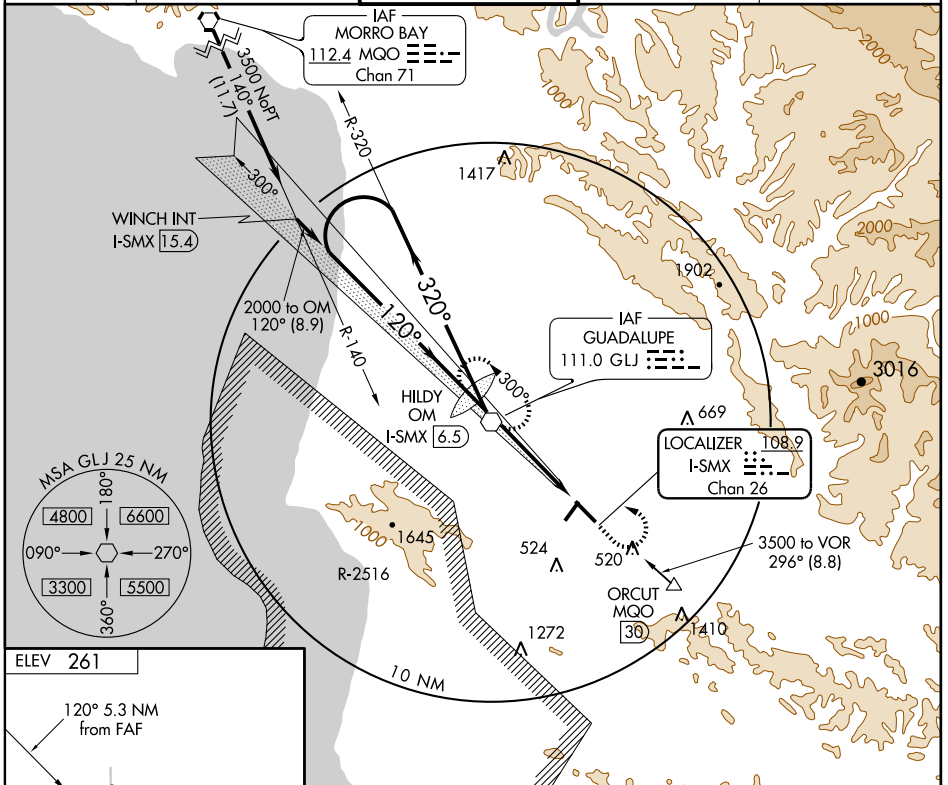
SANTA MARIA PUBLIC/CAPTAIN G. ALLAN HANCOCK FIELD (SMX)

⚠ * RVR 1800 authorized with the use of FD or AP or HUD to DA.

MALSR

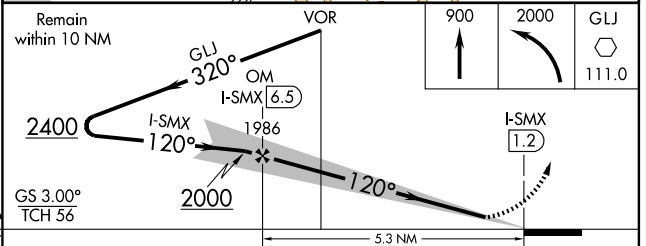
MISSED APPROACH: Climb to 900, then climbing left turn to 2000 direct GLJ VOR and hold.

ATIS 121.15	SANTA BARBARA APP CON* 124.15 327.8	SANTA MARIA TOWER* 118.3 (CTAF) 289.6	GND CON 121.9	UNICOM 122.95
-----------------------	---	---	-------------------------	-------------------------



SW-3, 07 MAY 2009 to 04 JUN 2009

SW-3, 07 MAY 2009 to 04 JUN 2009



CATEGORY	A	B	C	D
S-ILS 12		* 440/24	200 (200-½)	
S-LOC 12	680/24	440 (500-½)	680/40 440 (500-¾)	680/50 440 (500-1)
CIRCLING	820-1 559 (600-1)	840-1 579 (600-1)	860-1½ 599 (600-1½)	1320-3 1059 (1100-3)